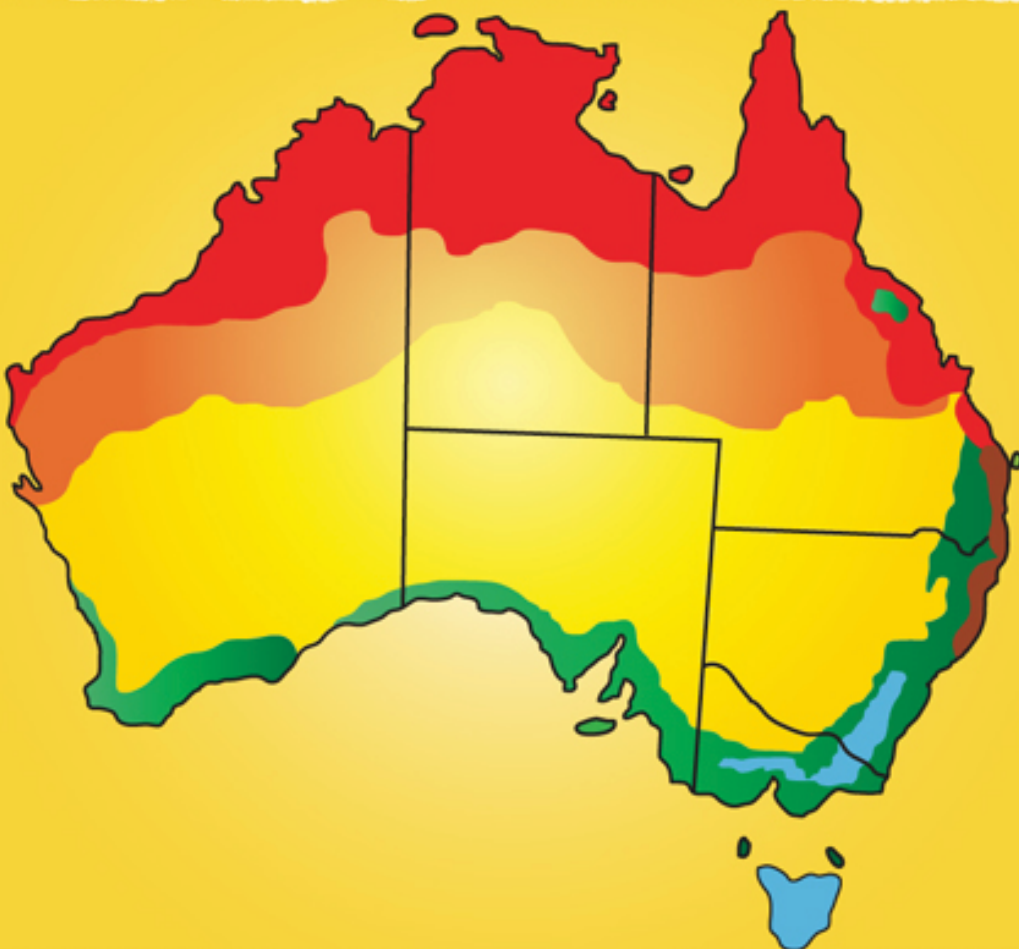




**Australian Geography Series**  
**STUDENT WORKBOOK**

# **Year 5: Characteristics Of Places**



**Section 1:**  
**Influences:**  
**Human And**  
**Environmental**

**Section 2:**  
**Climate,**  
**Savannahs**  
**And Bushfires**



By Lisa Craig

# Contents

A Note For The Student	4		
<b>SECTION 1: INFLUENCES: HUMAN AND ENVIRONMENTAL</b>	<b>5</b>	<b>SECTION 2: CLIMATE, SAVANNAHS AND BUSHFIRES</b>	<b>36</b>
Landforms And The Development Of Settlements	6	Australia's Climate Zones	37
Landforms And Settlements 1	7	Australia's Climate 1	38
Landforms And Settlements 2	8	Australia's Climate 2	39
Landforms Influence Development And Settlement	9	Australia's Climate 3	40
Landforms And Development	10	Australia's Climate 4	41
Development	11	Australia's Tropical Savannas	42
Landforms Influence Development	12	Climate And Vegetation 1	43
People Influence The Environment	13	Climate And Vegetation 2	44
Development Affects The Environment	14	Indigenous Climate Zones	45
Urban Development And The Environment	15	Managing Our Savannas	46
Urban Development 1	16	Characteristics Of Savannas	47
Urban Development 2	17	Development Of Savannas	48
Interpreting Data	18	Indigenous Influence	49
Inland Australia	19	Wildlife And Savannas	50
The Influence Of People	20	Savannas Of East Indonesia	51
People Influence Environments 1	21	A Comparison Of Savannas 1	52
People Influence Environments 2	22	A Comparison Of Savannas 2	53
People Influence Environments 3	23	The Environment	54
People Influence Australian Places	24	Wildlife	55
People Influence Places 1	25	Bushfires	56
People Influence Places 2	26	Prevention	57
Australian Places And Tourism	27	Being Prepared	58
Places And Tourism	28	On Bushfire Alert 1	59
Tourism And The Environment	29	On Bushfire Alert 2	60
Tourism	30	Fire-Stick Farming	61
Relationship With Country	31		
A Local Planning Issue 1	32		
A Local Planning Issue 2	33		
A Local Planning Issue 3	34		
A Local Planning Issue 4	35		

## Activity

## Landforms And Settlements 1

- ☐ Read the information on page 6 to help you to answer the questions and complete the tasks below.

1. Why were the first settlements in the Australian colonies located on ports?

---

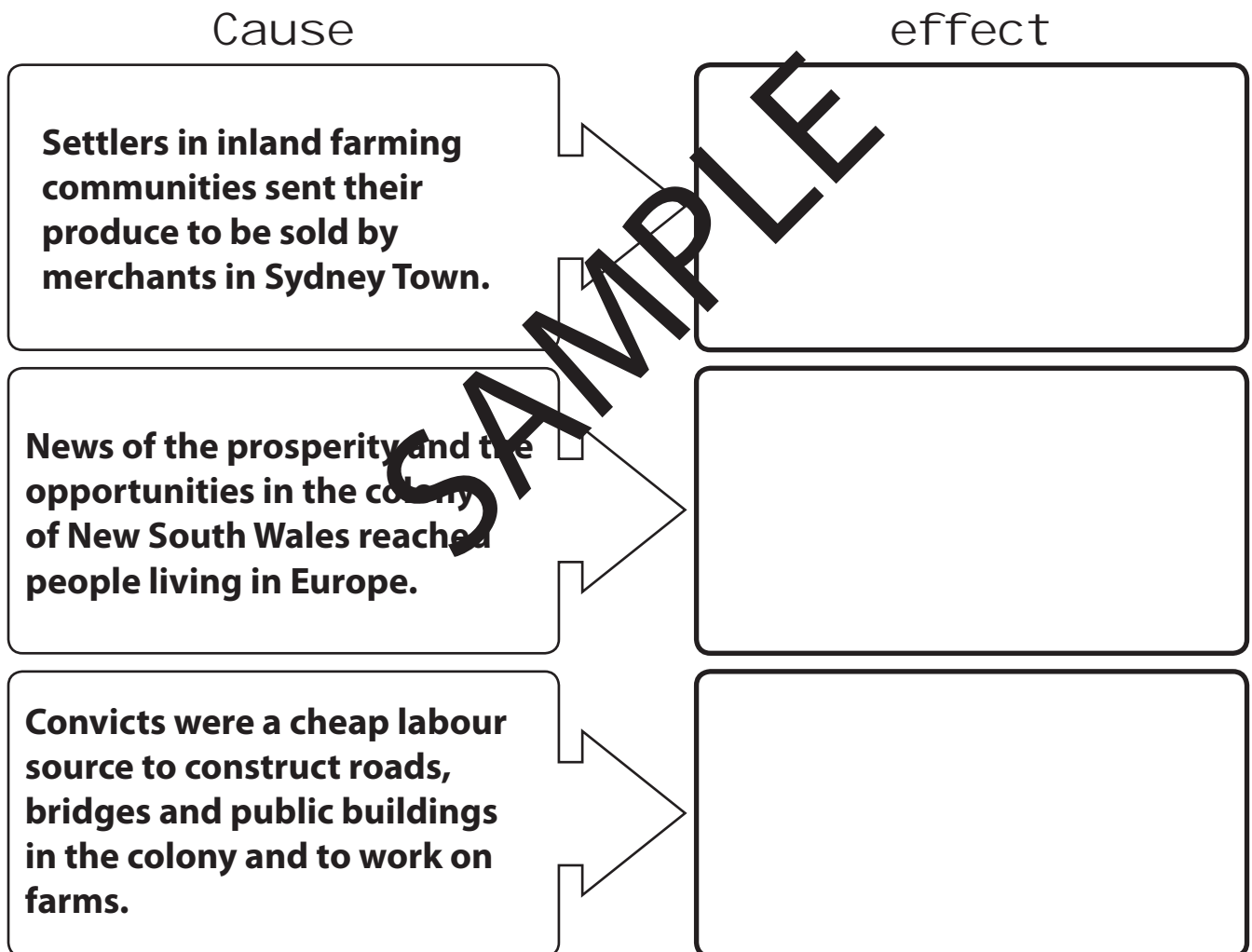
---

2. What caused people to move away from the first settlements on ports?

---

---

3. Complete the cause and effect chart about the growth pattern of Sydney.



4. What if Indigenous Australians living in the territories around the colonies' port settlements had put up more resistance to Europeans taking their land? How might this have affected the growth of the first settlements?

---

---

## Activity

## Development Affects The Environment

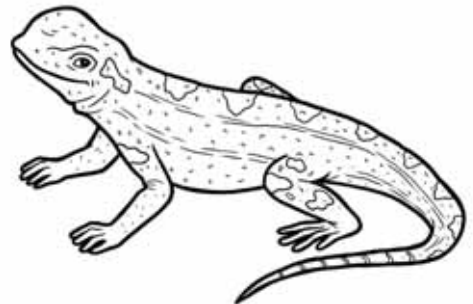
The Australian Capital Territory is home to various endangered species. Do your own research on two of its most iconic animals: the Earless Dragon Lizard and the Brindabella Ranges Corroboree Frog. You can find out more about these animals at the following websites:

- ▶ <http://www.environment.gov.au/biodiversity/threatened/publications/eastern-lined-earless-dragon-tympanocryptis-lineata-pinguicolla>
- ▶ [www.corroboreefrog.com.au/corroboree-frog](http://www.corroboreefrog.com.au/corroboree-frog)

- ☐ Complete the fact files with details about the animals' habitats and why they are endangered. Note down what is being done to conserve these species in the Australian Capital Territory.

### Earless Dragon Lizard

SAMPLE



### Brindabella Ranges Corroboree Frog



## Activity

## People Influence Places 1

- ☐ Read the information on page 24 to help you to answer the questions and complete the tasks below.

1. What is your local shopping centre like?

---

---

2. Why are shops in older inner city suburbs often organised in a strip along the main street?

---

---



3. How did big shopping centres "bring the city to the suburbs"?

---

---

4. Why is a shopping centre's location important to its success?

---

---

5. Work with a partner. Make a list in the box below of all the different types of shops that you know.

**SAMPLE**

6. Highlight the shops in the box that you visit often. Are these the same type of shops that your grandparents might visit? \_\_\_\_\_

### My Research

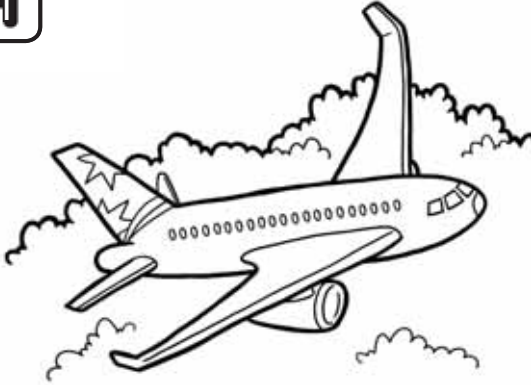
- ☐ What could you buy in the olden days in a: haberdashery, chandlery, hosiery, drapery and an apothecary? Where do we go today to buy these products? Write your response on the back of this sheet.

## Activity

## Tourism

- Look at the methods of transportation that tourists use to travel around Australia. Think about the advantages of each type of transport for tourists. Make brief notes under each image. Share your ideas with a partner.

1



---

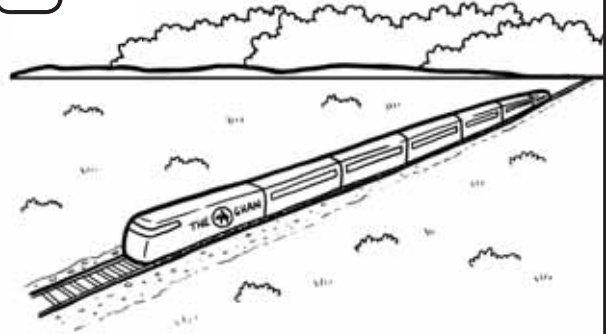
---

---

---

---

2



---

---

---

---

---

3



---

---

---

---

---

4



---

---

---

---

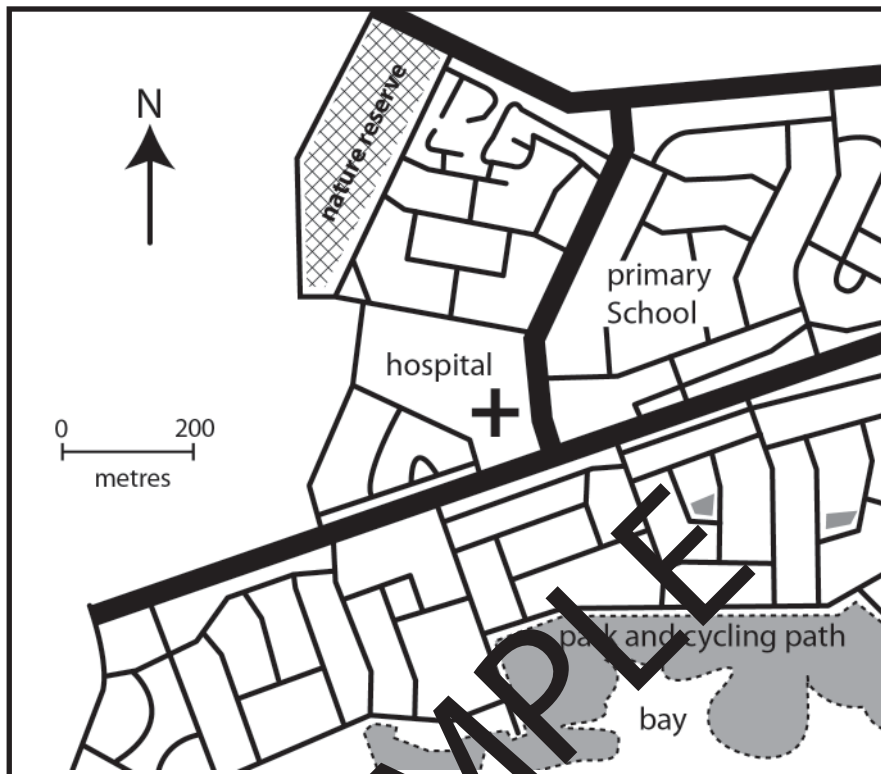
---



## Activity

## A Local Planning Issue 3

- With a partner, study this street map of a community called Bayside. Discuss with your partner the best location for the new swimming pool complex.



1. Mark and label on the map where the new swimming centre could be located.
2. Why have you chosen this site for the new swimming centre?

---

---

3. Calculate how far the swimming centre will be from:

the primary school \_\_\_\_\_

the hospital \_\_\_\_\_

a main road \_\_\_\_\_

Use a piece of string to help you to measure the distance along streets and roads. Match the length to the scale.

4. Share your ideas with another pair. Justify your swimming pool location.
5. Write down the directions in steps from the nature reserve to the swimming centre. Be precise and mention distances and landmarks.

---

---

**Activity****Indigenous Climate Zones**

The climate of Australia's tropical savannahs is said to have two seasons – the wet and the dry. Indigenous Australians, whose survival depended on their deep knowledge of this environment, recognised six seasons in the cycle of life in the savannahs.

- ☐ Consult the webpage below to find information on the Six Seasons of Kakadu and complete the table below with your notes.

► [www.kakadu.com.au/seasons/index.html](http://www.kakadu.com.au/seasons/index.html)

SEASON	CLIMATE AND WILDLIFE	ATTRACTIONS
<b>Gudjewg</b> (Monsoon season) December - March		
<b>Banggereng</b> (Thunderstorm season) April		
<b>Yegge</b> (Cool but humid) May - June		
<b>Wurrngeng</b> (Cold weather season) June - August		
<b>Gurrung</b> (Hot, dry weather) August - October		
<b>Gunumeleng</b> (Pre-storm season) October - December		



## Activity

# A Comparison Of Savannahs 2

- ☐ Study the data about Australia's tropical grasslands and the grasslands of East Nusa Tenggara Province, Indonesia.

Australia's Savannah Lands	East Nusa Tenggara Province
<b>Land Area:</b> 1.93 million km <sup>2</sup> <b>Population:</b> 600,000. <b>Population Density:</b> 3.2 (people living in one square kilometre). <b>Land Use:</b> Cattle-raising on large pastoral properties, mining, tourism, agriculture, vast areas of untouched savannahs, conservation areas for fauna and flora.	<b>Land Area:</b> 47,876 km <sup>2</sup> . <b>Population:</b> 5,000,000. <b>Population Density:</b> 102 (people living in one square kilometre). <b>Land Use:</b> Small land holdings growing crops (fruit trees, vegetables, cassava, cocoa, coffee beans, tobacco, spices), timber products, raising livestock (cattle, pigs), tourism.

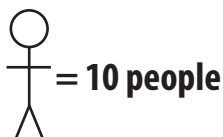
1. Compare the use of tropical savannah lands in northern Australia and East Nusa Tenggara Province, Indonesia. Write three facts.

Fact 1

Fact 2

Fact 3

2. Complete the legend to compare East Nusa Tenggara's population density to Australia's savannah land population density. You will be working with fractions.



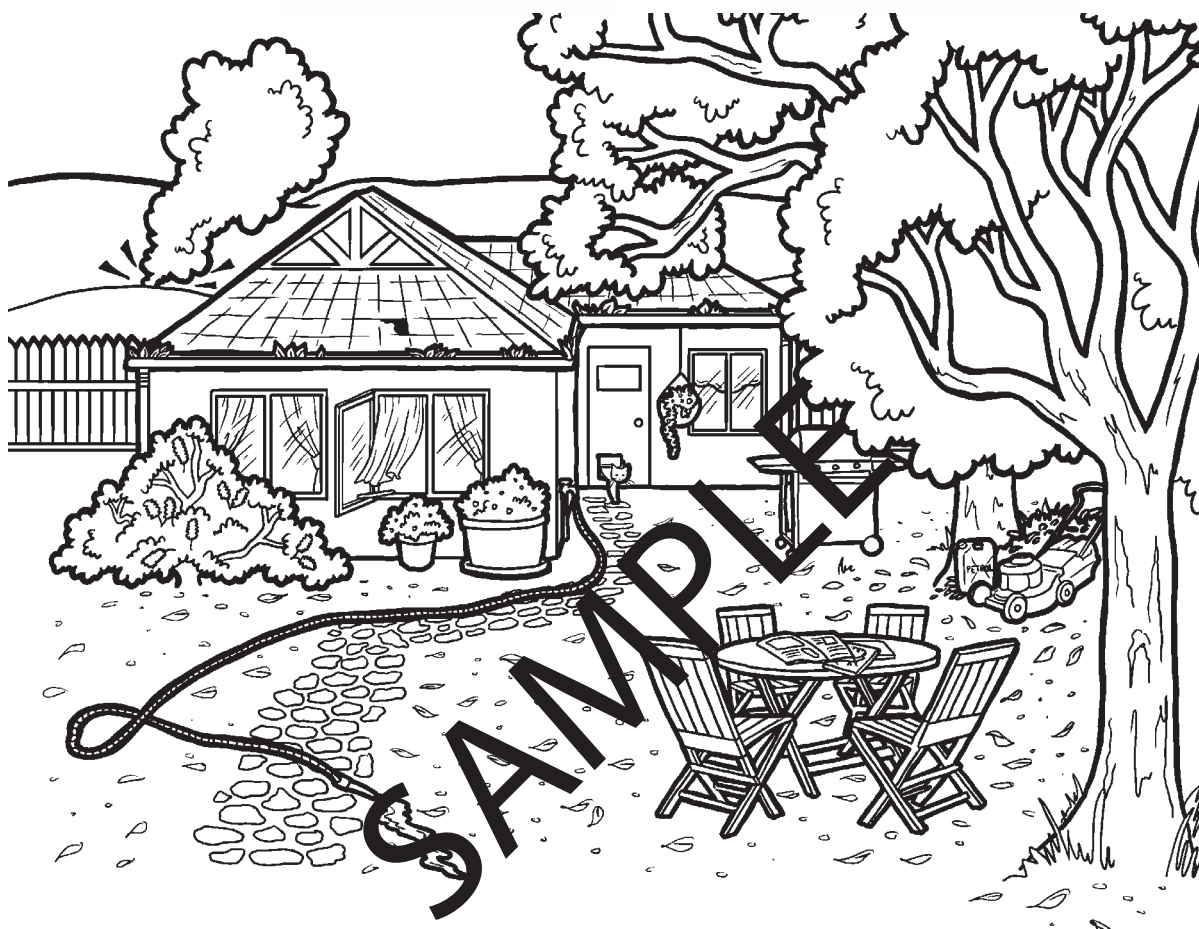
Australia	East Nusa Tenggara

- ☐ What recommendations would you give to the owner of this house to make it safer in the event of a bushfire? Write your advice in the space provided.

**Prepare**

**Act**

**Survive**



- \_\_\_\_\_
- \_\_\_\_\_
- \_\_\_\_\_
- \_\_\_\_\_